

Quick Reference Guide for UniSafe® 1mL Auto-injector



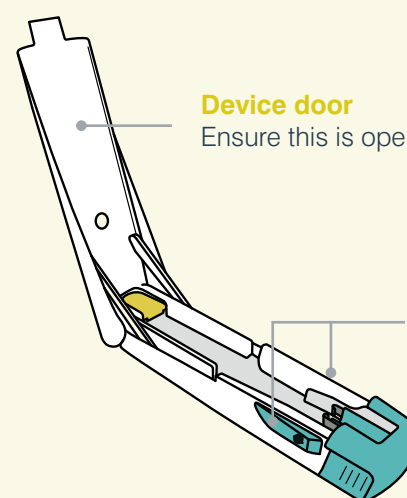
UniSafe® 1mL Auto-injector



UniSafe® 1mL safety syringe
Use this syringe type only with your UniSafe® 1mL Auto-injector.



Do NOT remove the needle cap with your hands.



Device door
Ensure this is open all the way.

Device door buttons
Press both to open the door.

Before you start

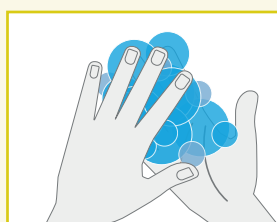
1. Remove the safety syringe from fridge **30 minutes before** you are ready to inject.
2. Inspect the medicine inside the safety syringe. It should be clear and colourless. There may be a small bubble.

⚠ Do not use if the medicine looks coloured or if it has any particles in it.

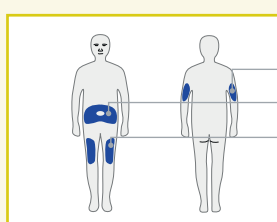
3. Check the name of the medicine on the safety syringe or label to make sure it is the correct one. Check the expiry date on the safety syringe label.

⚠ Do not use if it is past the expiry date.

Preparation

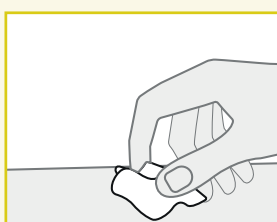


Wash your hands with soap and water.



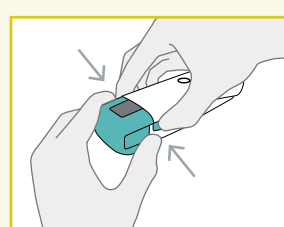
Choose your injection site.
Back of the arms (for caregivers)
Stomach area
Thighs

⚠ Do not inject into areas that are red, hard, bruised, or tender.

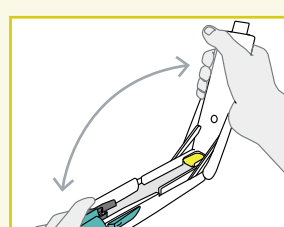


Expose your injection site and wipe the skin with an alcohol swab.

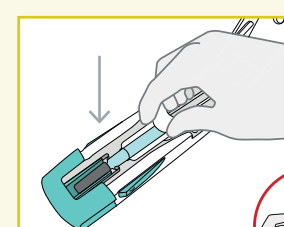
Preparing your UniSafe® 1mL Auto-injector



1. Press buttons
Press both buttons at the side of the device and lift door upwards.



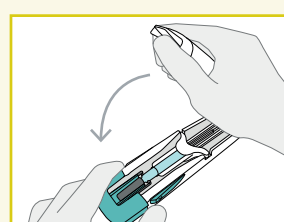
2. Open door
Open the door all the way until it **LOCKS** into place.



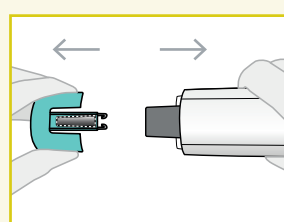
3. Insert syringe
Place your safety syringe inside the auto-injector.



Do not remove the needle cap with your hands.



4. Close door
Close the door all the way until it clicks into place.



5. Pull cap remover
Pull the needle cap remover from the auto-injector.

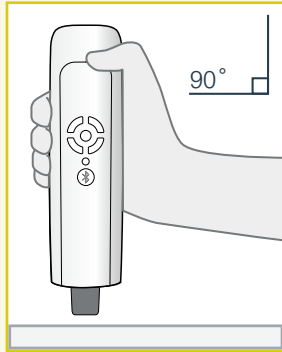


6. Put needle cap into bin
Put the needle cap into a bin.



Do not throw away needle cap remover.

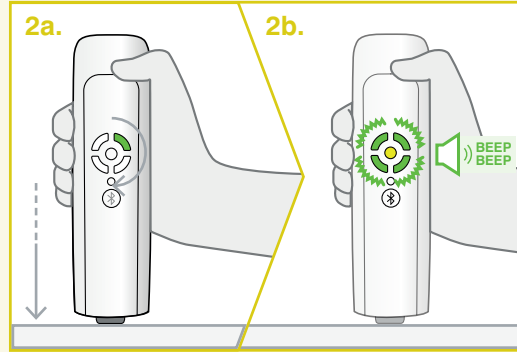
Injecting your medicine



1. Position

Hold the auto-injector at **90°** to the injection site.

Keep the injection wheel facing towards you, if possible.

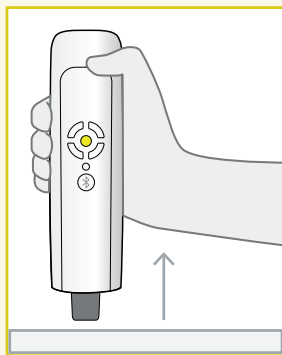


Push **down** and keep **holding down**

2a. Push down and keep HOLDING down to start the injection.

You will see the injection wheel rotate around. This could take up to 10 seconds.

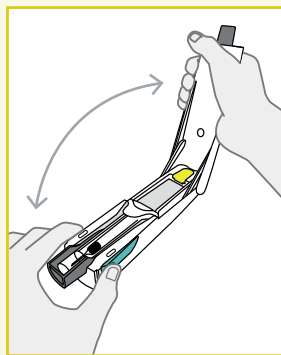
2b. You will hear the auto-injector **BEEP** and see it **FLASH GREEN** twice. Check the viewing window is yellow.



3. Remove

Once the auto-injector has **BEEPED** twice lift straight off.

The needle will be safely covered.



4. Open door

Open the auto-injector door all the way.

Remove the safety syringe from the auto-injector.

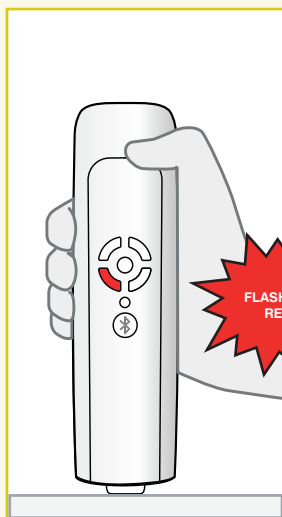


5. Throw away

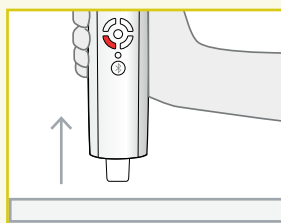
Put the used safety syringe into a sharps container.

Close the UniSafe® 1mL Auto-injector door and place the needle cap remover back onto the device.

Failed injection

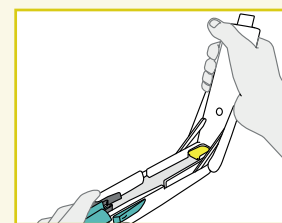


If a **FLASHING RED** light appears during the injection something has gone wrong.



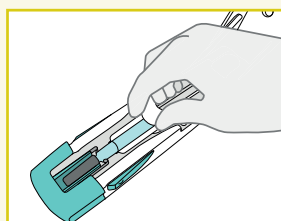
1. Lift device from injection site.

⚠ Do not attempt to inject again. Contact your nurse / doctor.

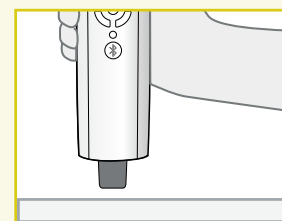


2. Carefully remove the syringe from the auto-injector.

⚠ Do not touch the needle end of the syringe.

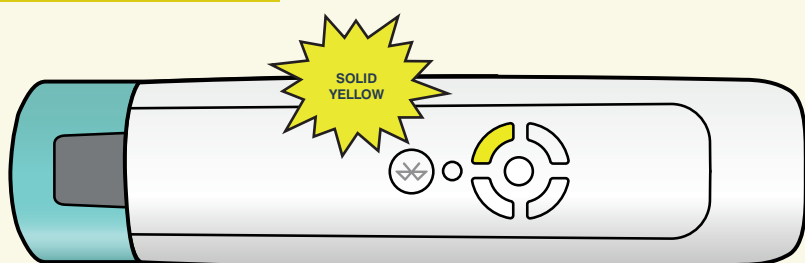


3. Put the used safety syringe into a sharps container.



Attempt to inject again at your next scheduled injection only.

Low battery alert



When it is nearing its end of life, UniSafe® 1mL Auto-injector will show a **SOLID YELLOW** light after you inject. This means the battery is low.



The expected lifetime for UniSafe® 1mL Auto-injector with normal use is up to 3 years, after which it must be replaced.



As soon as you see this yellow light contact your healthcare provider or local helpline for a replacement.